

KEY MANAGEMENT FOR ENTERPRISES

▶ Thales e-Security keyAuthority® is a hardened cryptographic appliance that provides high assurance key management to users of storage applications and systems with embedded encryption. keyAuthority supports the widely-accepted industry standard KMIP (Key Management Interoperability Protocol) to allow comprehensive endpoint interoperability. Centralized administration combines consistent key lifecycle policy enforcement and access controls with reliable auditing to help ensure data recovery and long-term business continuity. Enterprises now have a high performance key management solution that scales to support storage encryption requirements today and in the future. Its tamper-resistant and evident security boundary, which includes the entire chassis for higher assurance protection, has been designed to FIPS 140-2 Level 3.

▶ Key Benefits

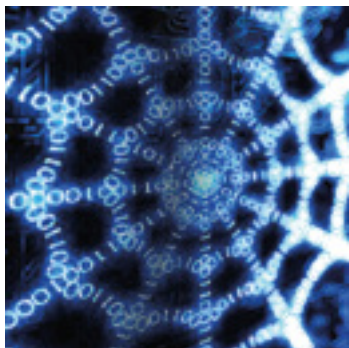
- Automates key lifecycle management across global enterprises
- Lowers risk of breaches with high-assurance, reliable hardware
- Accelerates storage encryption through pre-qualified solutions
- Centralizes policy using a single approach to control and audit keys
- Reduces management overhead by integrating storage encryption silos



Thales e-Security

keyAuthority®





keyAuthority

BENEFITS AND TECHNICAL SPECIFICATIONS*

Confidently manage encryption

- Key manager reliability for key protection and recovery is a top priority to control data access with confidence. Storage encryption deployment is simplified through pre-qualified device integration
- Device certification – tested and validated solutions based on the KMIP standard accelerate setup and deployment
- Extensible – a vendor-neutral approach allows new KMIP-compliant storage encryption solutions to be integrated quickly as new products become available

Meet continuity and data retention needs

The performance-optimized appliance secures keys long-term using a redundant hardware design to help ensure access.

- Redundant, FIPS-designed hardware – Hot swappable fans and power supplies, mirrored disks, and tamper-resistance features lower the risk of downtime
- Synchronized key replication – automated failover to a mirrored appliance helps ensure high availability for business continuity
- Key backup – routine backups via NFS or SCP to offsite data centers enable quick recovery

Achieve compliance and audit goals

Policies and logs are maintained within secure facilities that include the entire chassis boundary for greater reporting integrity.

- Policy-based controls – domains and key groups maintain rules for key access and sharing across partitioned applications
- A single point for auditing – a dedicated auditor role simplifies user privileges for limited system access to report activities
- Alerting and export – system functions are logged, with the ability to notify through email, SNMP, and syslog, and to securely export audit logs for central reporting

Reduce complexity with a unified approach

The key manager simplifies administration by providing a single global system to maintain. Time and cost is reduced through a unified approach based around operational best practices.

- Central key manager – application, compliance, and security teams manage from a single console to reduce the need for additional key manager servers
- Role-based access controls – well defined privileges and separation of duties maintain accountability across applications and groups of keys
- Current and legacy protocols – standards-based via KMIP and proprietary device interface support provides the flexibility to extend key management to future new applications

Follow us on:



*All specifications are subject to change - contact Thales for further information

Dimensions/Weights

- 2U standard rack units. Height 3.47in. (8.81cm), width 17.19in. (43.66cm), depth 30in. (76.20cm)
- 41lbs (18.6kg) without the rack mounting kit

Input Voltage

- 100 to 240VAC (autosensing); input line frequency nominally 50 to 60Hz; total power consumption 250W

Temperature

- Operating temperature 10 to 40°C (50 to 104°F); operating humidity 5% to 85% non-condensing at 40°C (104°F); operating altitude 0 to 6562ft (2km) above sea level
- Non-operating shock 20G, 11 ms duration, square wave
- Non-operating vibration 10G, 5 to 500 to 5Hz @ 1 octave intervals

Shock

- Operating shock 5G, 11 ms duration, half sine; operating vibration 5G, 5 to 500 to 5 Hz at 1 octave intervals
- Non-operating temperature -30° to 65°C (-22° to 149°F); non-operating humidity 95% rH maximum; non-operating altitude 0 to 40,000 ft (12 km) above sea level

Airflow

- Airflow volume 300ft³ (8.5m³) per minute; airflow direction intake from front, exhaust to rear

Replaceable Components

- Hot-swappable redundant fans and power supply units

Interfaces

- Serial RJ-45 console port for command line interface (setup only)
- 10/100BaseT Ethernet ports to the LAN
- Smart card reader (ISO 7816 compliant) for system key and configuration backup
- Web graphical user interface for role-based administration

Certifications and Interoperability

- Designed to FIPS 140-2 Level 3
- KMIP 1.0, 1.1 and 1.2 specification support
- Please refer to the partners tab at thales-eseurity.com/keyAuthority for the latest list of supported encrypted storage application partners

